
Stocking Program

Steelcase Jeraisy

We help **people** do their best work by
creating **places** that **work better.**

Our Purpose

Our Collection



Amia®

Task Chair.



Reply

Task Chair.



Node

Education Solution

Steelcase
LEARNING



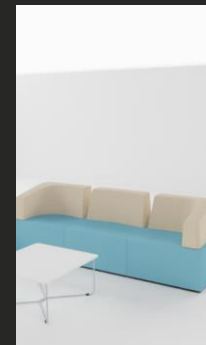
Amia® Air

Task Chair.



Eastside

Collaboration & Multi-purpose chair



B-Free

Lounge Seating

Amia Chair

Task chair with healthier seating that will keep you comfortable and productive the whole day long. We call it High Performance Seating!

Specification:

- Available in Black Fabric finish full black back & seat
- Adjustable Arms 1D and 4D (Up-Down-in-out)
- Adjustable Seat
- Base comes in two option

1 Available in Platinum Base 

2 Available in Black Base 

LiveLumbar height slides up or down for custom support that flexes with your back.



Height, depth, width and pivot arms telescope in and out



Back tension knob adjusts tension to your preference to help maintain your back's natural curve.



Amia Chair



CODE
CHR09675
1D arms



CODE
CHR09681
4D arms



CODE
CHR09678
4D arms

Header Text – Remove if Not Needed

**Maximum
comfort.**



Amia Air Chair

Task chair offers a fresh take on our hardworking, versatile Amia task chair.

Specification:

- Available in 3 Colors

Black 3DMickronit Air
Back with white base

Grey 3DMickronit Air
Back with white base

Black 3DMickronit Air
Back with black base



- Adjustable Arms 4D (Up-Down-in-out)
- Headrest availability

Air back with For additional back support, grasp both handles and slide up or down. Position the lumbar to fit comfortably into the curve of your lower back.



Height, depth, width and pivot arms telescope in and out



Back tension knob adjusts tension to your preference to help maintain your back's natural curve.



Amia Air Chair



- Grey Back
- Black Seat
- White Base



- Full black



- Full black
- White Base

CODE
CHR10479 4D arms
CHR10521 4D arms w/Headrest

CODE
CHR10480 4D arms
CHR10522 4D arms w/Headrest

CODE
CHR10478 4D arms
CHR10520 4D arms w/Headrest

A Fresh Take on Comfort



Reply Chair

Task chair with Easy mobility allows for quick reconfiguration of the office to support individual and collaborative working.

Specification:

- Mesh Back with upholstery seat comes in 3 colors

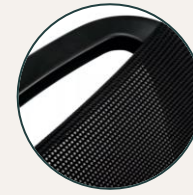
1 Black mesh back with black seat 

2 Orange Mesh back with black seat 

3 Green Mesh Back with black seat 

- Adjustable Arms 1D and 3D
- Seating Adjustments depth & height
- Base is black

HANDLE on Reply fosters mobility by giving you a convenient handhold to move the chair where it's needed.



HEIGHT-ADJUSTABLE LUMBAR SUPPORT is optional on Reply mesh to enhance back support.



TILT TENSION adjustment allows you to control the amount of resistance needed for reclining



MULTI-POSITION BACK LOCK allows you to lock the backrest in multiple positions.



Reply Chair



CODE
CHR10286 3D Arms



CODE
CHR10101 3D Arms
CHR10485 1D Arms



CODE
CHR10289 3D Arms

Easy.
Adaptable.



Eastside Chair

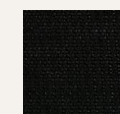
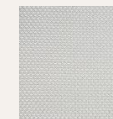
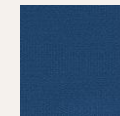
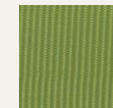
The Eastside chair is designed to provide comfort in various work areas. It offers high performance versatility with good looks. Eastside is a highly flexible solution that feels at home in any space

Specification:

Available in different options:

1. Black upholstery seat & back with black frame
2. Black mesh back with platinum frame
3. Black upholstery seat & back with platinum frame
4. Green upholstery seat & back
5. Orange upholstery seat & back
6. Blue upholstery seat & back
7. Green mesh back with upholstery black seat
8. Orange mesh back with upholstery seat
9. Grey mesh back with Seagull frame (white)
10. Black mesh back with Seagull frame (white)

Collaboration & Multi Purpose Chairs



Eastside Chair



CODE
CHR10199 Platinum Legs



CODE
CHR10304 Black legs

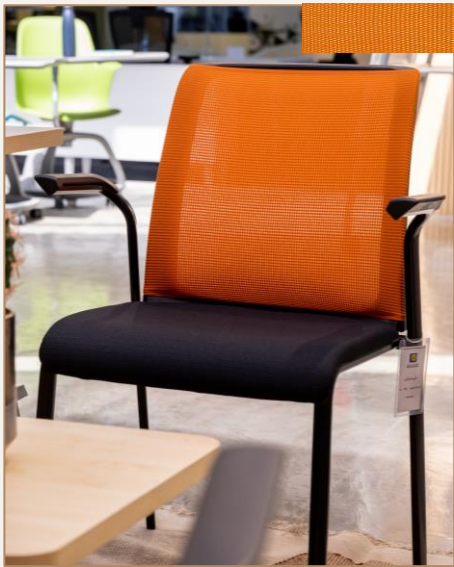


CODE
CHR10298 Black legs

Eastside Chair



CODE
CHR10196 Black Legs



CODE
CHR10301 Black Legs



CODE
CHR10482 White Legs

Eastside Chair



- Full blue with black legs

CODE
CHR10295 Black Legs

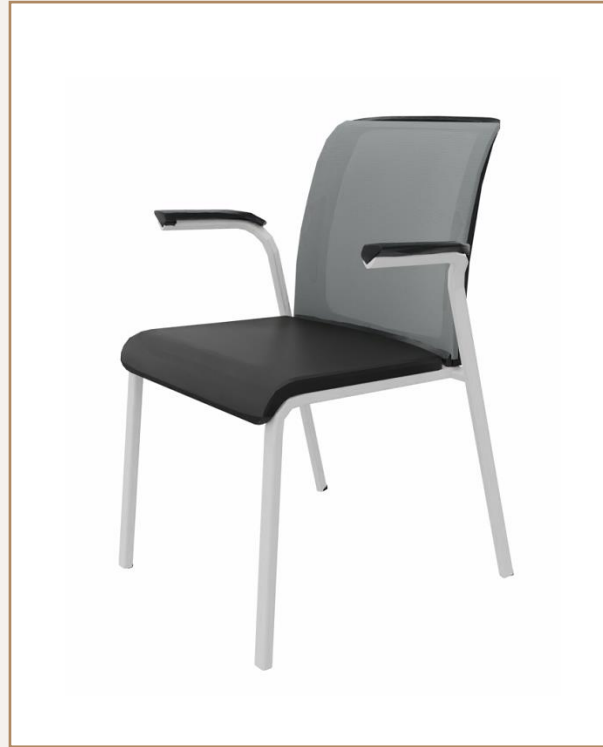


CODE
CHR10292 Black Legs



CODE
CHR10202 Black Legs

Eastside Chair



- Grey Mesh back with white legs

CODE

CHR10483
White Legs

Eastside Beam 3 Seaters

CODE
BNH00371 Vinyl Black



Elegance and
Comfort.



Node Chair

Collaboration & Educational chair. Mobile and flexible chair, that Supports active and team-based modes of learning.

Specification:

Available in 2 colors

- Picasso (Blue)
 - Wasabi (Green)
- Tablet holder
 - Personal worksurface
 - Tripod base for any belongings



Node Chair



CODE
CHR09881



CODE
CHR09880

B-free Sofa

B-Free soft seating create spaces where people easily connect and collaborate, and the collision of ideas becomes a natural part of the workday.

Specification:

A set of soft seating that includes 3 seats with 2 cubes:

- Light Beige Back with Baby blue seat
- Light Beige for big cube
- Baby blue for small cube



B-free Sofa Set

L-shape Right

CODE
SOF03945

I-shape Middle

CODE
SOF03944

L-shape Left

CODE
SOF03946

Big-Cube

CODE
SOF03925

- Full Light Beige

Small-Cube

CODE
SOF03924

- Full Baby Blue



Our Collection of Desking

1

Fusion

Completed Set of Desk

3

OttimaEcco

Completed Set of Desk

2

Fusion WorkStation

Completed Set of Bench

4

Ottima WorkStation

Completed Set of Bench

Fusion Office Set

While Fusion is suited to people working alongside colleagues, it can also be configured as a classic individual workstation, ideal for team managers.

Specification:

Completed desk range comes in 2 colors with different dimension

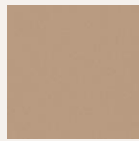
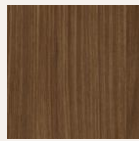
Laminate White

- W2000XD800
- W1600XD800
- W1800XD800



Laminate Walnut

- W2000xD800



- Modesty
- Coffee table
- Pedestal
- Credenza
- Cable tray



Fusion Office Set

White Office Set
2000x800

CODE
OFS01733

White Office Set
1600x800

CODE
OFS01763

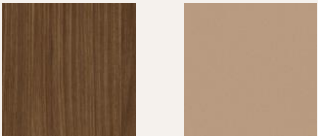


White Office Set
1800x800

CODE
OFS01769

Brown Office Set
1800x800

CODE
OFS01806



Brown Office Set
1600x800

CODE
OFS01807







Fusion Bench

Workstation which encourages and facilitates collaborative working whilst at the same time enabling people to stay focused on their work.

Specification:

Straight Tops

- Bench system Available in two option

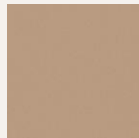
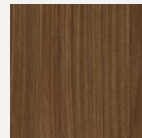
- 2 users

- 1600x1600
- 1600x1400



- 4 users

- 3200x1600
- 2800x1600



- Partito screen
- Cable tray for per user
- VolumArt pedestal for per user
- Sliding tops to give and easy



Fusion Bench



Bench Set 4 users
W3200x1600D

Bench Set 4 users
W2800x1600D

CODE
WKS00021

CODE
WKS00862



Bench Set 2 users
W1600x1600D

Bench Set 2 users
W1400x1600D

CODE
WKS00022

CODE
WKS00849



OttimaEco Office Set

With privacy screens and easy power access, OttimaEco Series is a simple and elegant benching solution. It fits to any workplace thanks to its clean design.

Specification:

Completed desk range comes with different dimension

Laminate White

- W1600XD800
- W1400XD800



- Modesty
- Coffee table
- Return
- Pedestal
- Credenza
- Cable try



OttimaEco Office Set

White Office Set 1600x800

CODE
OFS01765

White Office Set 1400x800



CODE
DSK04487





Steelcase

OttimaEco Bench

With privacy screens and easy power access, OttimaEco bench is a simple and elegant benching solution. It fits to any workplace thanks to its clean design.

Specification:

Straight Tops

- Bench system Available in two different sizes
 - 2 users
 - 1600x1600
 - 4 users
 - 3200x1600
- Divisio Framless screen
 - Cable tray for per user
 - VolumArt pedestal for per user



OttimaEco Bench

Bench Set 4 users
W3200x1600D

CODE
WKS00868

Bench Set 2 users
W1600x1600D

CODE
WKS00867





Our Collection of Meeting Table

1

**Square Meeting
Table**

Under Fusion Family

2

**Round Meeting
Table**

Under Fusion Family

3

**Rectangular
Meeting Table**

Under Fusion Family

Fusion Meeting Table

While Fusion is suited to people working alongside colleagues, it can also be configured as a classic meeting tables, ideal for casual meetings.

Specification:

Tops are Available in White color with different option

- **ROUND TABLE**
 - 1200x4
- **RECTANGULAR TABLE**
 - 240x120
- **RECTANGULAR TABLE**
 - 180x100
- **SQUARE MEETING TABLE**
 - 1600x1600
- Cable management
- Powder-Coated for legs



Fusion Meeting Tables

White Round Table 1200x40

CODE
CNT01708

**White Rectangular Table
2400x1200**

CODE
CNT02681

**White Rectangular Table
1800x1000**

CODE
CNT02678

White Square Table 1600x1600

CODE
CNT02693





Our Storage

1

Volum Art Cabinet

Storage Option

VolumArt Cabinet

Creates a varied landscape, provide workspace separation, and support varying needs for privacy and storage needs

Specification:

- White Color
- Steel front & Back
- Available in one size

➤ H110xW800



CODE
CPB01662





Triad Seating

Elegant Chair

Triad Product with a classic design and vinyl finish.



Black


Green


CODE
CHR08658

CODE
CHR08659

Brown


Beige


CODE
CHR08667

CODE
CHR09882



Black


Green


CODE
CHR08661

CODE
CHR08662

Brown


Beige


CODE
CHR08670

CODE
CHR09885



Black


Green


CODE
CHR08664

CODE
CHR08665

Brown


Beige


CODE
CHR08673

CODE
CHR09888

- Available only in 3 different options
- High Bick
 - Mid Back
 - Sled base

Sentra Chair

Triad Product comes only with
Aluminum Base
and mesh back in 3 different options

- Black mesh High Back with headrest
- Black mesh Mid Back
- Black mesh Sled base



High Back

CODE
CHR07304



Mid Back

CODE
CHR07310



Sled Base

CODE
CHR07307

Sentra Budget Chair

Triad Product comes only with **Black base** and mesh back in 3 different options

- Black mesh High Back with headrest
- Black mesh Mid Back
- Black mesh Sled base



High Back

CODE
CHR09312



Mid Back

CODE
CHR09315



Sled Base

CODE
CHR09318



Triad Panel System

Sentra Plus Bench System

Triad workstation for 4 users

[Click here for codes and description](#)



Verticals File Cabinets

- 2 drawers

CODE
FCV00015

- 4 drawers

CODE
FCV00040

- 3 drawers

CODE
FCV00020

- 2 drawers

CODE
FCV00030

- 4 drawers

CODE
FCV00025

- 3 drawers

CODE
FCV00035

Vertical File Cabinets

TRIAD Office Furniture

Model	(Width)	(Depth)	(Height)
F4100	460mm	610mm	1275mm
F3100	460mm	610mm	970mm
F2100	460mm	610mm	710mm



Model # F2100



Model # F3100



Model # F4100

Standard Features:

- All cabinets have a central locking system.
- An "inter-lock" system that prevents more than one drawer opened at one time.
- Adjustable bar in drawers to allow for A4, Legal, and Letter Size filling.
- Adjustable glides.
- Flush drawer pulls.
- Standard colors: Beige Tan & Grey. Additional colors are available upon request.

ستيلكيس الجريسي المحدودة
Steelcase Jeraisy Ltd.

Our marketing policy is one of continuous product development. We therefore reserve the right to alter the specifications without any prior notice.

P.O.Box-102 Riyadh-11383, Kingdom of Saudi Arabia
 Tel.: 009661-265 0031/265 0103 - Fax : 009661-265 0049/265 0068
 For Sales Inquiries: Tel.: 01-419 8000, 02-691 1333, 03-635 5555
 E-mail: inquiry@steelcasejeraisy.com

Storage and Book Cabinets

CODE
CPB01127

CODE
CPB01130

CODE
CPB01136

CODE
CPB01133

CODE
CPB01139

CODE
CPB01142

CODE
BKC00040

CODE
BKC00060




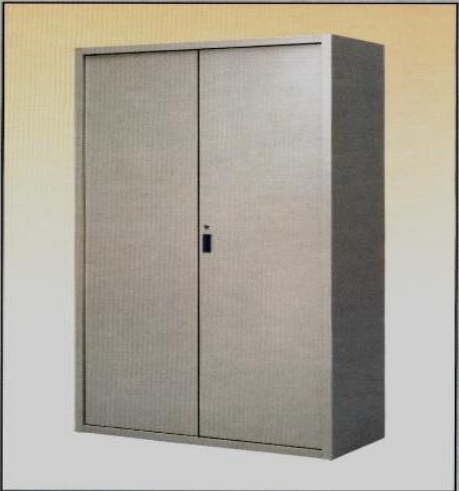
Storage & Book Cabinets





TRIAD Office Furniture

Standard Features:

- Manufactured from heavy gauge quality steel.
- Central locking standard.
- Adjustable glides.
- Adjustable Shelves.
- Standard colors: Beige Tan & Grey.

Additional colors are available upon request.



	High	Medium	Low
	(Width) (Depth) (Height)	(Width) (Depth) (Height)	(Width) (Depth) (Height)
	1070mm X 460mm X 2060mm	914mm X 460mm X 1651mm	1070mm X 460mm X 900mm
Model SC5000 Storage Cabinet without doors	Model SC5000SB Storage Cabinet without doors	Model SC5000B Storage Cabinet without doors	
	Model SC5001 Storage Cabinet with steel swing doors	Model SC5001SB Storage Cabinet with steel swing doors	Model SC5001B Storage Cabinet with steel swing doors
	Model SC5002 Storage Cabinet with steel sliding doors	Model SC5002SB Storage Cabinet with steel sliding doors	Model SC5002B Storage Cabinet with steel sliding doors
	Model SC5003 Storage Cabinet with glass sliding doors	Model SC5003SB Storage Cabinet with glass sliding doors	Model SC5003B Storage Cabinet with glass sliding doors

[Click here for codes and description](#)

Storage and Book Cabinets

- 2 drawers

CODE
FCL00040

- 4 drawers

CODE
FCL00050

- 4 drawers

CODE
FCL00065

LATERAL FILES

Features

Strong unibody construction and front frame structure minimize racking and misalignment.

Drawer fronts are removable and replaceable.

Adjustable glides simplify alignment on uneven floors.

Knockout holes in cabinet makes it easy to gang.

Safety interlock prevents tipping. Only one drawer can be opened at a time.

Progressive heavy duty suspension allows complete access to file contents.

Rubber bumpers cushion opening and closing for quiet operation.

Front removable locks simplify field changes.

Two hanging file folder frames per drawer.



MODEL#	DIMENSIONS	MODEL#	DIMENSIONS	MODEL#	DIMENSIONS
	D W H		D W H		D W H
LFL00230	- 18" X 30" X 26 3/4"	LFL00330	- 18" X 30" X 38 3/4"	LFL00430	- 18" X 30" X 51 1/4"
LFL00236	- 18" X 36" X 26 3/4"	LFL00336	- 18" X 36" X 38 3/4"	LFL00436	- 18" X 36" X 51 1/4"
LFL00242	- 18" X 42" X 26 3/4"	LFL00342	- 18" X 42" X 38 3/4"	LFL00442	- 18" X 42" X 51 1/4"

Steelcase Jeraisy Ltd.

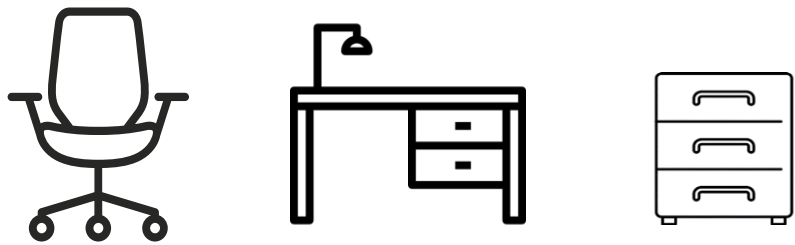
Our marketing policy is one of continuous product development. We therefore, reserve the right to alter the specifications without any prior notice.
For details, please contact Steelcase Jeraisy Customer Service at 01, 265 0108 or 265 0031
Fax : (966 1) 265 0068, 265 0049 P.O. Box 102, Riyadh 11383, K. S. A. (SJL 033)08/01

Appendix

Better Is Possible

*Our Warranty not only for product,
its also to do our best work for
the places in designing better futures
for the wellbeing of people.*

Warranty



Lifetime Warranty	12 Year Warranty	3 Year Warranty
Frame, case/carcass, doors, drawers, pulls/handles, supports, legs and base, suspensions, carts, modesty panels, wire managers/cable trays, baskets, cup holder, dividers, rails, shelves, hanging folders bar, interlocks and locks	Height-adjustable mechanisms and electronics, modular power/electrical power, mechanisms, casters, rollers, wheels, and glides	Power Options and/or data, and/or USB



Steelcase

The Power
of Possibility

Thank you.