

# Cubic & Cubic Colours



Interface®

It's only in our synthetic world that we want uniform perfection – one shade, no variation. If nature doesn't work that way, then why should we? Like fallen leaves on the forest floor, stones in the riverbed and flowers in a field, each Cubic and Cubic Colours carpet tile is unique; yet when installed, they blend into a cohesive pattern. As two of Interface's groundbreaking i2® non directional products, Cubic and Cubic Colours can be installed using tiles from multiple dye lots and tiles can be set in any direction, which means there's less waste during production and installation. Cubic is offered in 29 neutral colorways. And, with Cubic Colours' dazzling selection of 21 colors ranging from bold primaries to candy-coated pastels to rich blues and greens, you can add a vibrant flair to any environment from retail to a pediatric clinic to the corporate think-tank.



PRODUCT CUBIC COLOR 6386 HORIZONTAL INSTALLED NON DIRECTIONAL





PRODUCT CUBIC COLOR 4295 SYMMETRY INSTALLED NON DIRECTIONAL

# Cubic™ Colorline

---



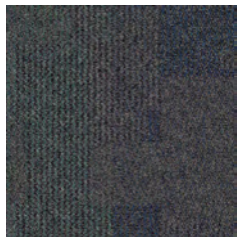
4287 SHAPE



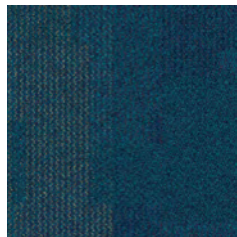
4288 GEOMETRY



4289 MATRIX



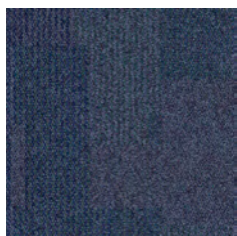
4290 PERIMETER



4291 SQUARE



4292 AREA



4294 SURFACE



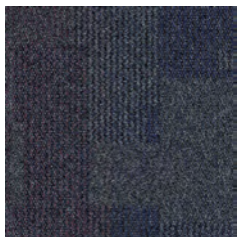
4295 SYMMETRY



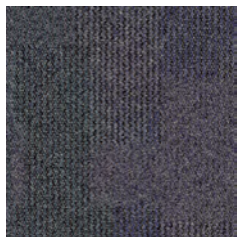
4296 TRANSVERSE



4851 MEASUREMENT



4853 ANGLE



4855 OPTIC



4856 STRUCTURE



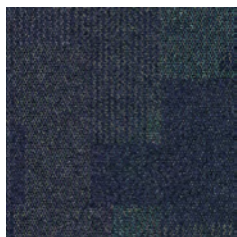
4857 FUNCTIONAL



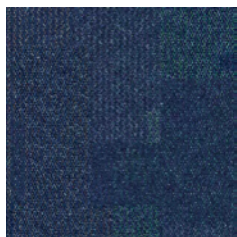
4858 FORM



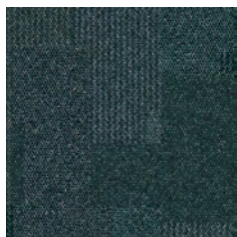
4860 AXIS



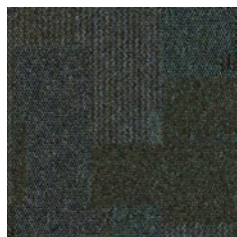
6383 BALANCE



6384 COMPOSITION



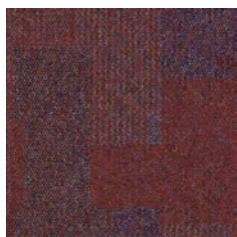
6385 VERTICAL



6386 HORIZONTAL



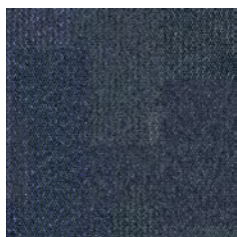
6387 DEPTH



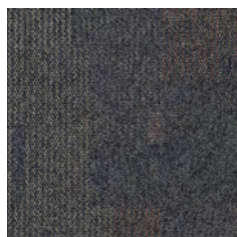
6389 SUPPORTS



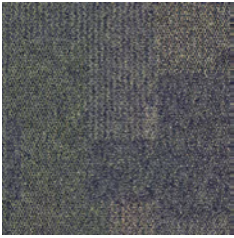
6390 LENGTH



6392 DIMENSION



6393 HEIGHT



6394 DIAGONAL



6395 CONSTRUCTION



6396 MOVEMENT



6397 PURPOSE

## Specifications



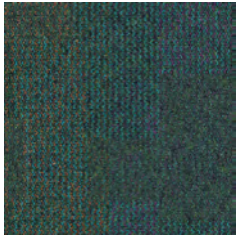
Modular, 50cm x 50cm	1380102500
Backing System	GlasBac® Tile
Yarn Manufacturer	Aquafil
Yarn System	100% Recycled Content Type 6 Nylon
Color System	100% Solution Dyed
Construction	Tufted Textured Loop
Preservative Protection	Intersept®
Soil/Stain Protection	Protekt2®
Pile Thickness	0.093 in., 2.4 mm
Pile Density	6,968
Total Recycled Content	71%
Indoor Air Quality	CRI Green Label Plus #GLP0820



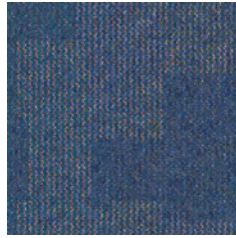
NON-DIRECTIONAL

## Cubic Colours™ Colorline

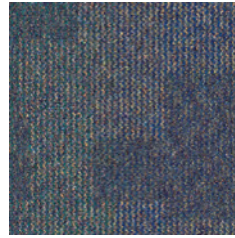
---



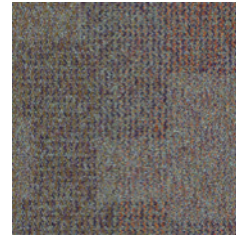
7248 PARROT



7249 BLUE LAGOON



7251 IRIDESCENT



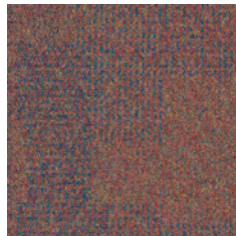
7252 ABALONE



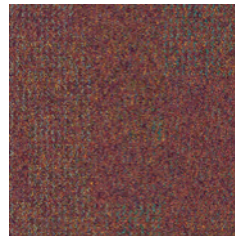
7253 CHAMELEON



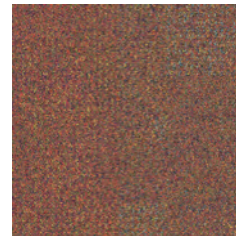
7254 NORTHERN LIGHTS



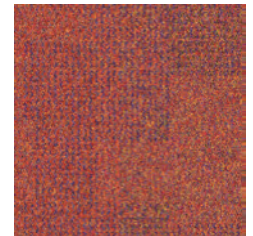
7255 MOSAIC



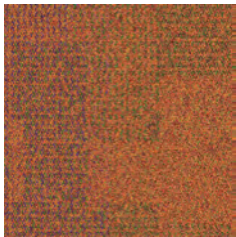
7256 KALEIDOSCOPE



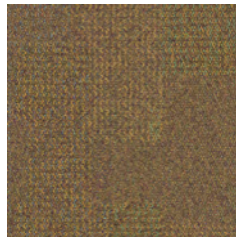
7257 TAPESTRY



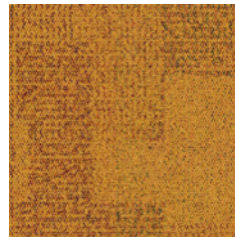
7258 CARNIVAL



7259 PAINTED DESERT



7260 SUNFLOWER



7261 YELLOW



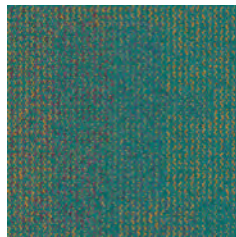
7262 ORANGE



7263 RED



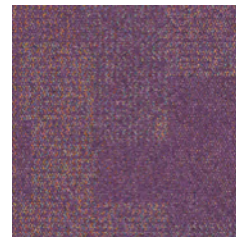
7264 GREEN



7265 TEAL



7266 BLUE



7267 VIOLET



7268 MAGENTA



7269 BLACK



## Specifications



Modular, 50 cm x 50 cm	1382902500
Backing System	GlasBac® Tile
Yarn Manufacturer	Aquafil
Yarn System	100% Recycled Content Type 6 Nylon
Color System	100% Solution Dyed
Construction	Tufted Textured Loop
Preservative Protection	Intersept®
Soil/Stain Protection	Protekt2®
Pile Thickness	0.093 in., 2.4 mm
Pile Density	6,968
Total Recycled Content	71%
Indoor Air Quality	CRI Green Label Plus #GLP0820



NON-DIRECTIONAL

All product specifications reflect averages derived from product sample testing, are subject to normal manufacturing and testing tolerances and inherent pattern variances, and may be changed without notice. For more information about these and other important attributes of the product(s) described herein, including recycled content and product warranty information, please see [www.interface.com/disclaimer](http://www.interface.com/disclaimer).



## Why Our Modular Flooring?



### i2® Modular Flooring

*Minimize Waste & Save Money.*

Interface's i2 styles have mergeable dye lots. That means i2 tiles from different dye lots always blend with tiles of the same color, even when individual tiles are selectively replaced years later. This minimizes the need for attic stock and saves money. And i2 styles that install non directionally generate an average of only 1.5% installation waste as compared to 3-4% for typical modular carpet and an average of 14% for traditional roll carpet.



### Cool Floor™

*The Low Carbon Option.* Help stop climate change. ALL Interface modular flooring sold in North America is third party verified climate neutral Cool Floor. We start by using low-carbon materials and manufacturing processes, then Cool Floor zeros out all remaining greenhouse gas (GHG) emissions associated with the entire life cycle of your flooring, from raw material extraction through use and recycling.



### TacTiles®

*No Glue Installation.* Our revolutionary TacTiles installation system eliminates the need for glue, adhering tiles securely together to form a floor that "floats" for greater flexibility, easier replacement and long-term performance. The result? Less mess, less waste and virtually no VOCs, not to mention an environmental footprint that is over 90% lower than that of traditional glue adhesives.



### Intersept®

*Mold Protection.* Our proprietary preservative, Intersept, protects our modular carpet against mold growth and odor-causing bacteria — guaranteed. Intersept treated carpet, with proper maintenance, shows no mold or bacterial growth when tested per the ASTM E2471 Standard Test Method. Intersept is low in toxicity, water insoluble and contains no arsenic, heavy metals, phenols or formaldehyde.



### ReEntry®

*Recyclable is Now a Reality.* Through our ReEntry program and partnerships with our fiber suppliers and recycling centers throughout North America, separated Type 6 and 6,6 nylon are recycled into new 6 and 6,6 nylon while separated GlasBac®, GlasBacRE and similar competitor backings are recycled into new GlasBacRE non-virgin PVC backing using our Cool Blue™ technology. The result? Products with up to 89% total recycled content, including as much as 27% post-consumer content.



### Sustainable Choice

*Environmental Responsibility.* More than 95% of Interface products manufactured in the Americas carry the GreenCircle Certified Environmental Facts label, which has verified that standard Interface products are manufactured using 99% renewable energy and offer a minimum of 66% and 80% total recycled content when backed with GlasBac and GlasBacRE backing respectively. All Interface products include published HPDs (Health Product Declarations) or Declare Labels and more than 99% have a published EPD (Environmental Product Declaration) globally, and all products produced in the Americas are NSF/ANSI 140 gold or platinum certified.

## Third Party Certification

### cool floor™

**Cool Floor** – Our third party verified carbon offset program zeroes out all greenhouse gas (GHG) emissions associated with the entire life cycle of your flooring.



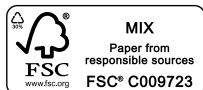
**Environmental Product Declaration (EPD)** – A statement of product ingredients and environmental impacts over the entire life cycle of a product. A comprehensive life cycle assessment (LCA) is performed to ISO standards to develop an EPD, after which both the EPD and LCA must be third party verified.



**Sustainable Assessment for Carpet** – The only carpet sustainability standard in North America that evaluates the environmental impact of carpet for its entire lifecycle.



**CRI Green Label Plus** – An independent testing program that identifies carpet and adhesives with very low emissions of VOCs to help improve indoor air quality.



[www.interface.com](http://www.interface.com)

**United States Headquarters**

1503 Orchard Hill Road  
LaGrange, GA 30240  
1.800.336.0225 ext.56511

**Canadian Headquarters**

233 Lahr Drive  
Belleville, ON K8N 5S2  
1.800.267.2149 ext.52128

**Brazilian Headquarters**

Rua Surubim, 577 - Conjuntos  
73/74 7o Andar  
04571-050 - São Paulo - SP  
+ 55 11 2196 0900

**Latin American Headquarters**

Montes Urales # 415 Piso 6  
Col. Lomas de Chapultepec  
México City, D.F. 11000  
Mexico  
+ 52 55 6395 5100



Climate change is undeniable. And reversible. Our mission is to prove it.  
**Join the #ClimateTakeBack and help create a climate fit for life.**